

Bureau Engineer Roger G. Khalil

for consultancy services



"We are enthusiastic about what we do and we take pride in our relationships with clients."



Company Information



Table of Contents

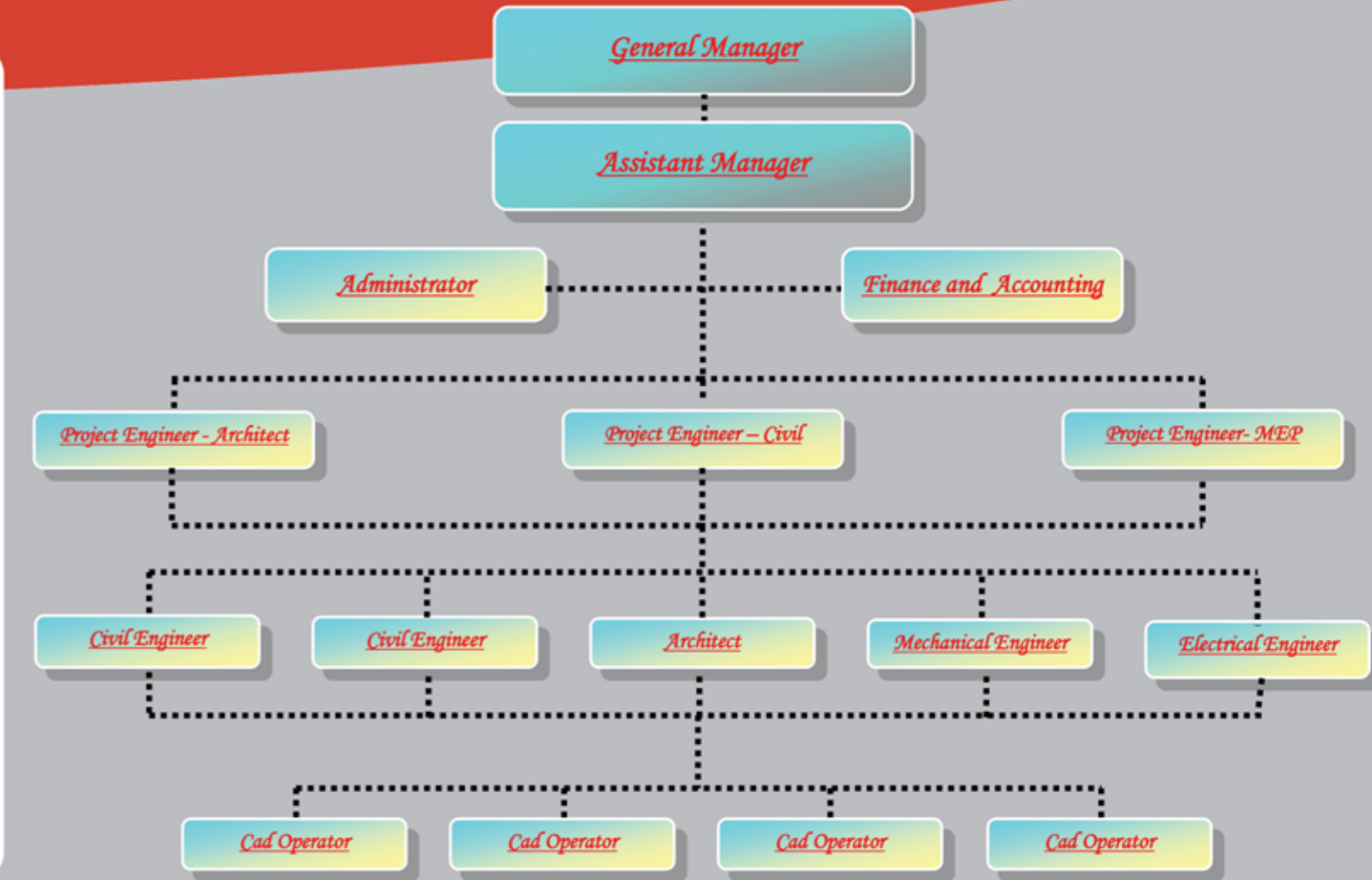
- *Company Information*
- *Company Profile*
- *Classifications*
- *Selection of Projects*
- *Recently Completed Works*

Established in 1987, *Bureau Engineer Roger G. Khalil* has been successfully operating in the field of engineering consultancy in private and public sectors.

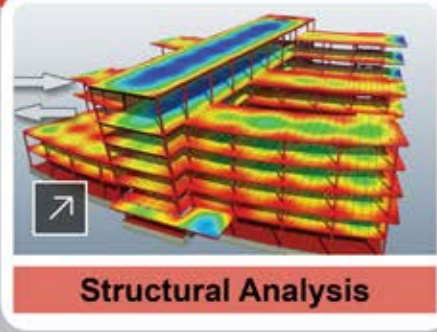
The company has grown efficiently over the last decade, reaching the highest standard of quality and expertise in building.

Services include preliminary investigations and advice, feasibility study, preliminary design, detailed design, tender evaluation and site supervision.

Overview



Organizational Chart



Structural Analysis



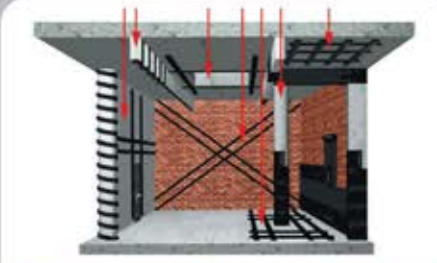
Architectural Design



Mechanical Consultancy



Electrical Consultancy



Structural Strengthening



Environmental Compliance



Energy Efficiency



Construction Supervision



Environmental Impact(EIA)



Renewable Energy Studies



Biomass Studies



Feasibility Study

Bureau Engineer Roger G. Khalil is a consultancy office providing full range of design, supervision and project management services in building and road sector. Additional newly implemented service is renewable energy and environmental studies.

The bureau is an independent firm committed to offer impartial advice. It provides multidisciplinary services tailored to suit the requirements of each project.

The proper translation of project criteria into reality is dependent on a close and continuous relationship with the client. His participation in planning activities is essential in a total team effort to reach a successful solution for each case.

For this purpose, highly qualified engineers are assigned to provide each client efficient contact and control throughout the project period. The client can thus review and approve the progress of his project where goals and objectives are developed into reality.

The bureau is registered in the Ministry of Finance under the number: 29180 - 601 and is classified in the public sector.

List of Services:

- Preliminary investigations and feasibility study.
- Preliminary drawings for all trades including: structural, architectural, mechanical, electrical, and renewable energy.
- Permit drawings as per Order of Engineers requirements.
- Preparation of tender documents for bidding including bill of quantities, specifications and conditions of contract.
- Preparation of construction and execution drawings.
- Site supervision.
- Project management as per FIDIC and general requirements of Lebanese Regulations.
- Budgeting, financial statements, cost volume profit analysis and planning.
- Renewable energy and biomass studies.
- Environmental studies (EIA-IEE).

Classifications



Bureau Engineer Roger G. Khalil For Consultancy Services

المر من يهه الأمر

يقدم مكتب المهندس روجيه خليل للاستشارات الهندسية انه مصنف في مجلس الإنماء والإعمار وفقاً لقرار رقم 2010/127 بتاريخ 2010/127 (رقم الملف S181) كما يلي:

Group 3	20 000 000\$	شاريع بناء
Group 1	5 000 000\$	شاريع طرق
Group 1	5 000 000\$	شاريع مائية
Group 1	5 000 000\$	شاريع أخرى

لمزيد من التفاصيل يرجى مراجعة مجلس الإنماء والإعمار.

تفضل بقول لائق الاحترام

مجلس الإنماء والإعمار
 تليفون: 4422000
 فاكس: 4422000
 بريد إلكتروني: info@crd.gov.lb

Classified by:
 The Council for Development and Reconstruction for building projects up to 20 000 000 USD and others

الجمهورية اللبنانية
 وزارة الأشغال العامة والنقل
 المديرية العامة للطرق والسبيل
 رقم: ٢٩ بتاريخ ٢٠١١/١٢/٢٠

إفادة تصنيف وعدم القصد

جانب: المهندس روجيه جورج خليل

عملاً بأحكام الفقرة الثالثة من المادة السادسة من المرسوم رقم ٣٦٨٨ تاريخ ٢٥ كانون الثاني سنة ١٩٦٦ .

نلتفتكم أن اللوحة المشككة بموجب المادة الخامسة لفترة . ب . من المرسوم المذكور ، قد صنفكم بالقرار رقم ١١٣٦/١٩٦٦ مبدئي تاريخ ٢٠١٢/٩/١٩ فسي الجدول الثاني فئة . أ . الدرجة . الأولى- لتنفيذ أعمال المياني . غير مخلصي عن الالتزامات لفئة تاريخه .

رئيس لجنة التصنيف
 المدير العام للطرق والمياني بالتكليف
 المهندس هادي بولس

The Ministry of Public Works - Building First Class

كهرباء لبنان
 مؤسسة عامة
 ELECTRICITE DU LIBAN

شارع رقم - بيروت - لبنان 20-442720
 فاكس: 443828 - 443968 - 80884

BUREAU ENGINEER ROGER G. KHALIL For Consultancy Services
 Bouchrich-Mar takla Street - Saint Joseph Center - 8th floor
 Tel : 03/116603 Fax: 01/893830

رقم الملف: 131
 رقم الصادر: 2010/3/19
 بيروت في 2010/3/19

الموضوع: افادة .
 المرجع: كتابكم بتاريخ 2010/2/26
 المسئل لدى المؤسسة تحت رقم 1986.

بالإشارة إلى الموضوع والرجع اعلاه، نفيد بأن "Bureau Engineer Roger G. Khalil for consultancy services" مسجل على لوائح المهندسين الكهربية في كبرياء لبنان.

G2 : CONSULTANTS
 G5 : OFFICES FOR CONTROL AND SUPERVISION MT LINES, POSTES, LT NETWORK AND BRANCHES
 G6 : CONSULTANT ENGINEERING FOR CIVIL CONSTRUCTION

اعطيت هذه الافادة بناءً على طلب.

بمفوض من المدير العام مدير التجهيز بالإنابة المهندس الشيخ محمد علي

"Electricité du Liban" - Consultant G2, G5, G6

الجمهورية اللبنانية
 وزارة الطاقة و المياه
 المديرية العامة للموارد المائية والكهربائية
 مصلحة تلفيق

رقم الصادر: ٢٠١٢/١١/١٨
 بيروت في: ٢٠١٢/١١/٢٤

جانب من يهه الأمر

الموضوع: افادة تصنيف وعدم القصد للمهندس روجيه جورج خليل
 المرجع: كتاب رقم ٢٠١٢/١١/١٨ بتاريخ ٢٠١٢/١١/١٩ والقرار رقم ٢٠١٢/١١/١٩ المسئل لدى المؤسسة بتاريخ ٢٠١٢/١١/٢٠
 كتاب رقم ٢١١ بتاريخ ٢٠١٢/١٠/٢٢

ان عضو ومقر لجنة تصنيف المهندسين - مياه - في وزارة الطاقة والمياه المديرية العامة للموارد المائية والكهربائية - يقدّم للمهندس روجيه جورج خليل
 مهندس بمرجع القرار رقم ٢١١ بتاريخ ٢٠١٢/١٠/٢٢ كتاباً مسجلاً في الدروس المائية - الجدول رقم ٢٣ - في الدرجة الثالثة
 على اسم المهندس نفسه
 و قد غير مخلصي عن الاشارة في تلك الصفحات المذكورة ، و لم يطرأ أي تعديل على تصنيفه لفئة تاريخه .
 ولتبيان ، وبناءً على طلب اعطيت هذه الافادة بتاريخ الرابع والعشرين من شهر تشرين الثاني عام الفين واثني عشر .

ملاحظة: ان هذه الافادة صالحة لمدة سنة واحدة تبدأ من تاريخ صدورها و تلك بناءً على المادة ٤٠١ من القانون رقم ٢٠٠٠/١٢٢ .
 ملاحظة: ان رفض الصور الفوتوغرافية غير المتعلقة من صنفها .

عضو ومقر لجنة تصنيف المهندسين - مياه - في وزارة الطاقة و المياه
 رئيس مصلحة تلفيق بالإنابة
 رنا الأحمدى

The Ministry of Energy and Water Resources - water studies Second Class

مجلس الإنماء والإعمار
 بيروت - لبنان

رقم: ١١٣٦٩٩٩
 بيروت في ٢٠١١/١٢/٢٠

مجلس وزير البيئة المعظم

الموضوع: افادة بتصنيف اللجنة الاستشارية العامة للموارد المائية والإعمار ضمن فئة الدراسات الفنية

الرجوع: كتاب رقم ٢٠١٢/١١/١٨ بتاريخ ٢٠١٢/١١/١٩ المسئل لدى المجلس تحت الرقم ١٣٢٤
 كتاب رقم ١١٣٦٩٩٩ بتاريخ ٢٠١١/١٢/٢٠ والقرار رقم ٢٠١٢/١١/١٩

بالإشارة إلى الموضوع والرجع السابق اعلاه،

وبناءً على طلب مدير الدراسات في المرجع اعلاه، المخلصي على ان يوافق المجلس على تصنيفه في فئة الدراسات الفنية للموارد المائية والإعمار في قراره رقم ١١٣٦٩٩٩ تاريخ ٢٠١٢/١١/١٩ المسئل لدى المجلس في الرابع عشر من شهر كانون الثاني من عام الفين واثني عشر، وذلك من خلال قراره رقم ١١٣٦٩٩٩ بتاريخ ٢٠١٢/١١/٢٠ والقرار رقم ٢٠١٢/١١/١٩

ACE - Associated Consulting Engineers
 Al Khalil Consulting Engineers (MCE)
 BTD - Bureau Technique pour le Développement
 BDTIP - Bureau Technique d'Ingenierie & des Travaux Publics
 Dar Al Handasah (Nahid, Yehia & Partners)
 Dar Al Handasah Consultants (Hadi & Partners)
 Doha Engineering Studies
 Earth Link & Advanced Resources Development S.A.R.L. - ELARD
 Ecometric S.A.R.L.
 Inshah Liban S.A.R.L.
 Pagine Consulting Engineers
 Engineer Roger G. Khalil
 Engineering, Design & Environmental Services - Edes

The Ministry of Environment to perform environmental studies

"Quality forms an integral part of our working practices. It is crucial for our sustainable business."

Quality assurance mechanisms are standard practice in our office.

The implementation of the quality policy is the responsibility of all staff members."

Selection of Projects



Ministry of Finance Buildings in Lebanon
Cost Estimate: 2,500,000\$

Complete refurbishing of the existing 14 buildings of the Ministry of Finance all over Lebanon. Work includes external and internal areas. Complete bidding documents and permits for tendering were prepared.



Municipality facility building - Kfarkatra, Shouf
Cost Estimate: \$1,200,000

Design for the transformation of the existing public school into a facility building including: celebration area, new municipality building, health center, kindergarten, gym, dorms and amphitheater.



Beirut Sports City. Cost Estimate: \$ 10,125,525

Refurbishing of existing facilities including external elevations/areas, electrical/mechanical equipment, internal finishing and playgrounds, waterproofing.. Complete bidding file for tendering was prepared.



Kleyaat 1191. Cost Estimate: \$ 1,076,000

Design and detailed drawings for a residential building in Kleyaat – Kesserwan with façade decoration and distinct internal finishing.



Rosewood, Mansourieh. Cost Est.: \$ 7,500,000

Supervision, architectural, structural, and MEP consultancy for 7 residential blocks. Permit and detailed construction drawings were produced.



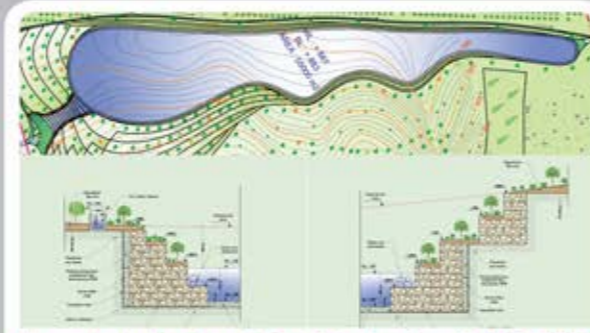
Degrilleur "EDL". Cost Estimate: \$ 500,000

Design works for structural refurbishing of pump building and degrilleur area including slab strengthening and concrete jacketing all complete to "Electricité du Liban" requirements.



Electrical Energy Production from PV system
Cost Estimate: \$ 1,500,000

Technical and economic study for a PV array designed to reduce energy consumption for a factory in Lebanon. Environmental impact and CO2 reduction calculation.



Aana Lake Project. Cost Estimate: \$ 3,000,000

Preliminary and detailed design for a recreational lake in Aana, Bekaa using environment-friendly concepts and materials. Permit approvals were taken from legal authorities. Environmental impact was assessed.



Nile University & Teaching Hospital. Sudan
Cost Estimate: \$ 25,000,000

Design and detailed drawings for a new faculty of medicine and teaching hospital also including: dormitories, mosque, parking and outdoor spaces.



Leaning Towers, Dubai. Cost Est.: \$ 50,000,000

Preliminary design for asymmetric, juxtaposed and 100 m high office buildings. Non-orthogonal angles are the main concept to mark the towers' presence in their "high-tech" surroundings.



Green Residence, Achrafieh
Cost Estimate: \$ 75,000,000

Green Residence is a commercial and residential tower. Preliminary design was done with the aim to create dynamism in function, form and perception; for a cutting edge outcome in the Achrafieh Skyline. The idea is to feature vertical gardens along the 140 m long facade, thus giving residents exquisite green views and giving back to the city part of its green heritage.

Recently Completed Works



Domaine du Soleil, Kfardebian. EIA.
The "domaine du soleil" at Kfardebian is a touristic project composed of 23 separate houses built according to old Lebanese traditions.



Saint John Paul II Church, Dekwaneh

Saint John Paul II Church is a Maronite Church in Dekwaneh. Being a religious space, its exterior and interior were designed along one main idea: creating an atmosphere of worship, and reverence. In order to convey these concepts, the church was conceived as a space with an iconic pyramidal roof featuring steps leading to the Cross. Finally, the church was also designed to be environment-friendly, featuring energy efficient cooling/heating systems and water harvesting systems.



Cost Estimate: \$ 4,000,000
Approx. Total Area = 6600 sqm
A full set of drawings for the project were produced: from preliminary design to permit drawings.



EDL New Central Building. New Vision for the Future. Location: Medawar, Beirut.

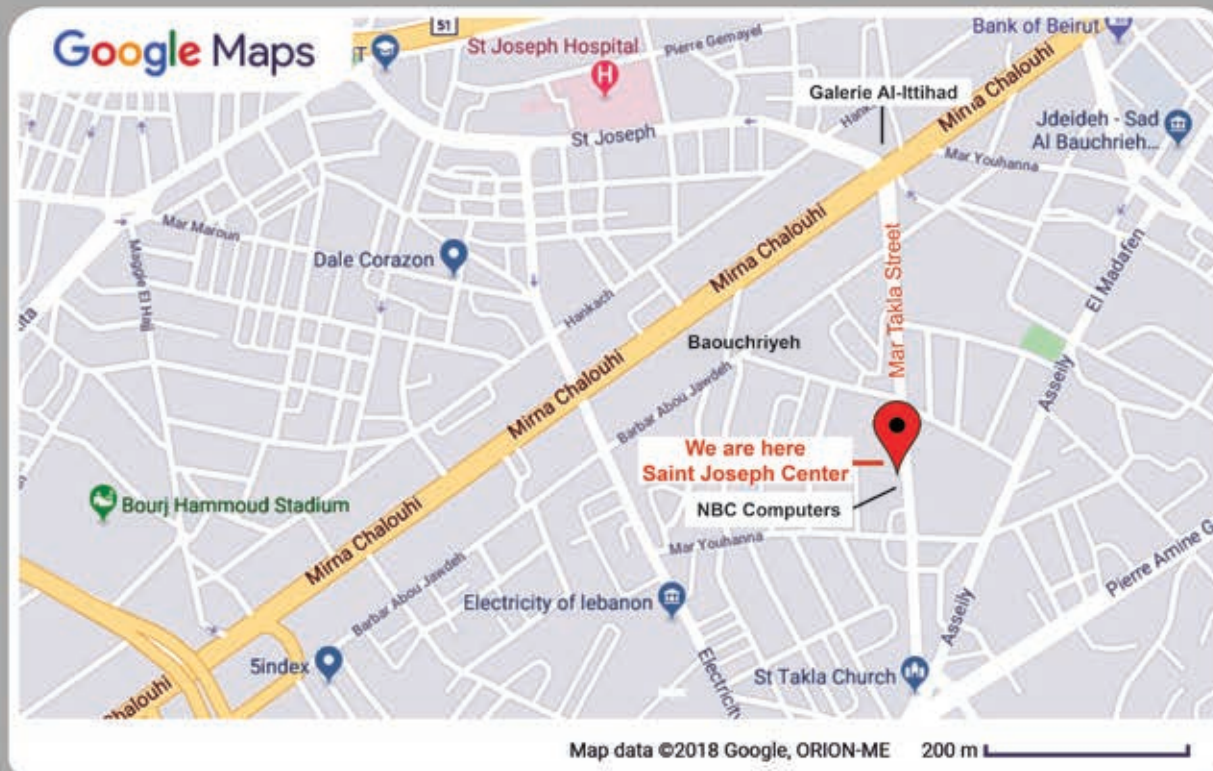
Rising 152 meters above ground level, EDL New Central Building was conceived as an iconic landmark for the city and a new vision for the future. It features street level lobby space, recreational areas in the podium (4 levels), as well as 25 office floors and 11 levels of below grade parking. Representing the "Electricite du Liban", the design challenge was to incorporate renewable energy solutions with sustainable architecture. Thus, the design provides for wind turbines on the roof of the towers and an array of photovoltaic panels covering a significant part of the upper towers' skin. 15-20 000 kW/h of green electricity are expected to be generated per year. Also, the specific geometry and skin of the tower serve to reduce effects of wind, sun and rain. All of these characteristics were combined to design a state of the art green building in the Medawar Area, which overlooks Beirut Port and benefits from outstanding sea views.



Cost Estimate: \$ 90,000,000
Approx. Total Area = 83 000 sqm
A full set of drawings for the project were produced: from permit documents to construction drawings. Bidding documents including B.O.Q, specifications and conditions of contract were also completed.

EIA scoping and EIA were submitted to the MOE according to decree 8633. All potential environmental impacts were assessed (air quality, noise, biodiversity...) Analysis of project alternatives was performed. Environmental management plan was proposed. Approvals were issued accordingly.





Bureau Engineer Roger G. Khalil for consultancy services
Baouchriyeh, Mar Takla Street. Saint Joseph Center, 8th and 9th floor
Phone 03 116 603 - Fax 01 893 830 - Email: rogerkhalil@yahoo.com
Website: www.renegygroup.com - Email: info@renegygroup.com